



# KASWELD

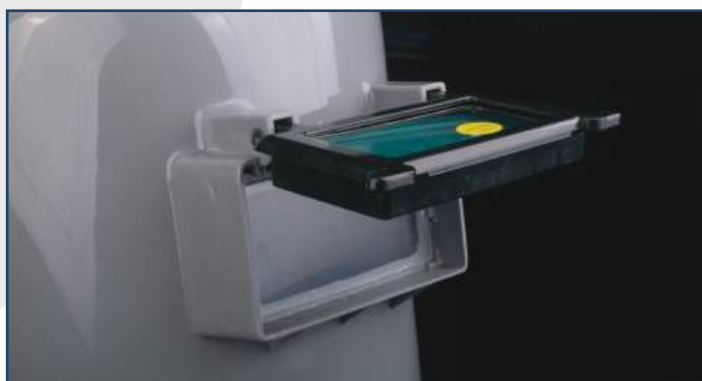
## Data Sheet

Item	Welding Helmet with Safety Cap
Material	Fiber Metal, special industrial plastic
Color	Iron Gray / Ocean Blue
Transparent Lens	108*50mm PC
Dark Lens	108*50mm Glass, Shade No. DIN#10 (DIN#8/9/10/11/12 Available upon separate purchasing)
Adjusting Angle	0~90°, Firm standing at any position
Link System	One-Clip system
Head Band	Adjustable gear system, comfortable skin contact
Standard	ANSI Z87.1 / ANSI Z89.1
Feature	Safe welding at everywhere

## WELDING HELMET WITH SAFETY CAP



One-Clip connecting system Reliable Up & Down shift



Separate frame for transparent & black lens

**C  
A  
U  
T  
I  
O  
N**

### PLEASE READ THESE INSTRUCTION BEFORE USING THIS HELMET

1. Use the proper shade of impact resistant filler plate and replace when scratched or pitted, Plates are not unbreakable.
2. This helmet only for eye and face protection from sparks, harmful rays & spatter of welding operations.
3. Suitable impact-resistant eye protection (spectacles or goggles) must be worn at all times when using this helmet. Replace lenses when scratched or pitted.
4. Inspect the helmet often. Immediately replace all worn or damaged parts. Clean with mild soap and lukewarm water. Never use solvents.
5. This helmet will not protect against severe impact hazards such as fragmenting grinding wheels, explosive devices. Abrasive disks or corrosive liquids. Machine guards and proper eye and face protection must be used to protect from these hazards.
6. Selection of proper models for specific hazards and communication and operating conditions of all instructions. precautions and limitations to the wearer is the responsibility of user safety specialists.

FAILURE TO FOLLOW THESE INSTRUONS, MISUSE OR ABUSE OF THIS HELMET CAN RESULT IN IN JURY.

• DO NOT REMOVE THIS LABEL •

• MEETS ANSI Z87.1

Made in China

WELDING HELMET WITH SAFETY CAP, makes a safe welding anytime & everywhere. Fiber Metal industrial enable solid protection and long lifetime. The patented One-Clip link system makes easy assembly and firm standing of the welding helmet during the welding, The PC transparent lens gives extra protection of eyes, the glass dark lens gives precise shade number. The Safety Cap ptotects users' head from dropping and hitting. This product is an ideal SAFE MATE FOR EVERY WELDER.